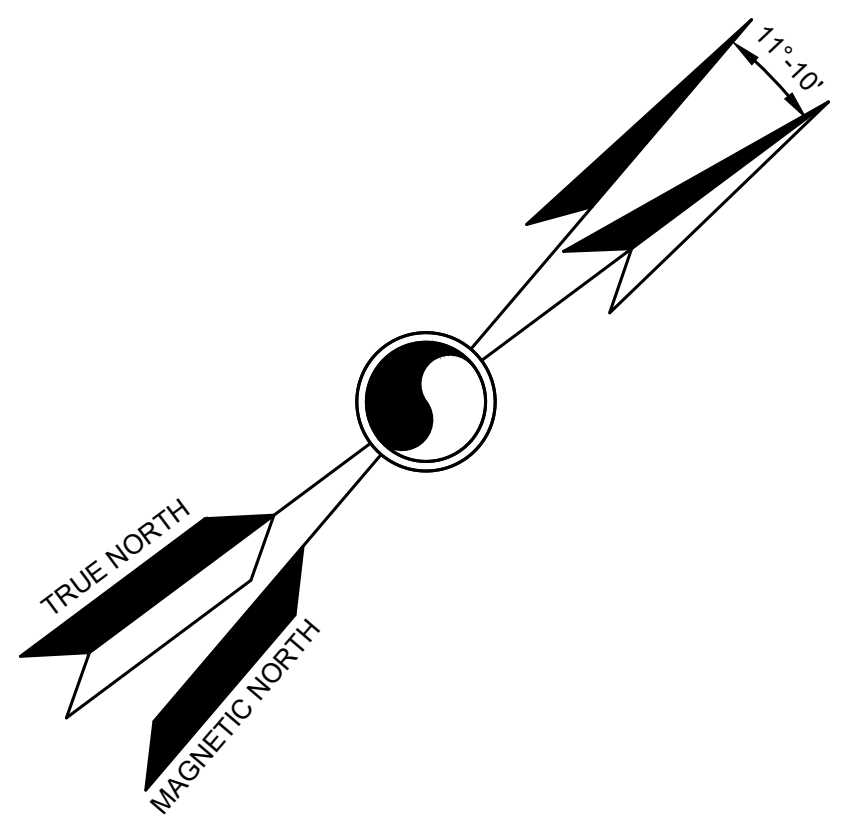
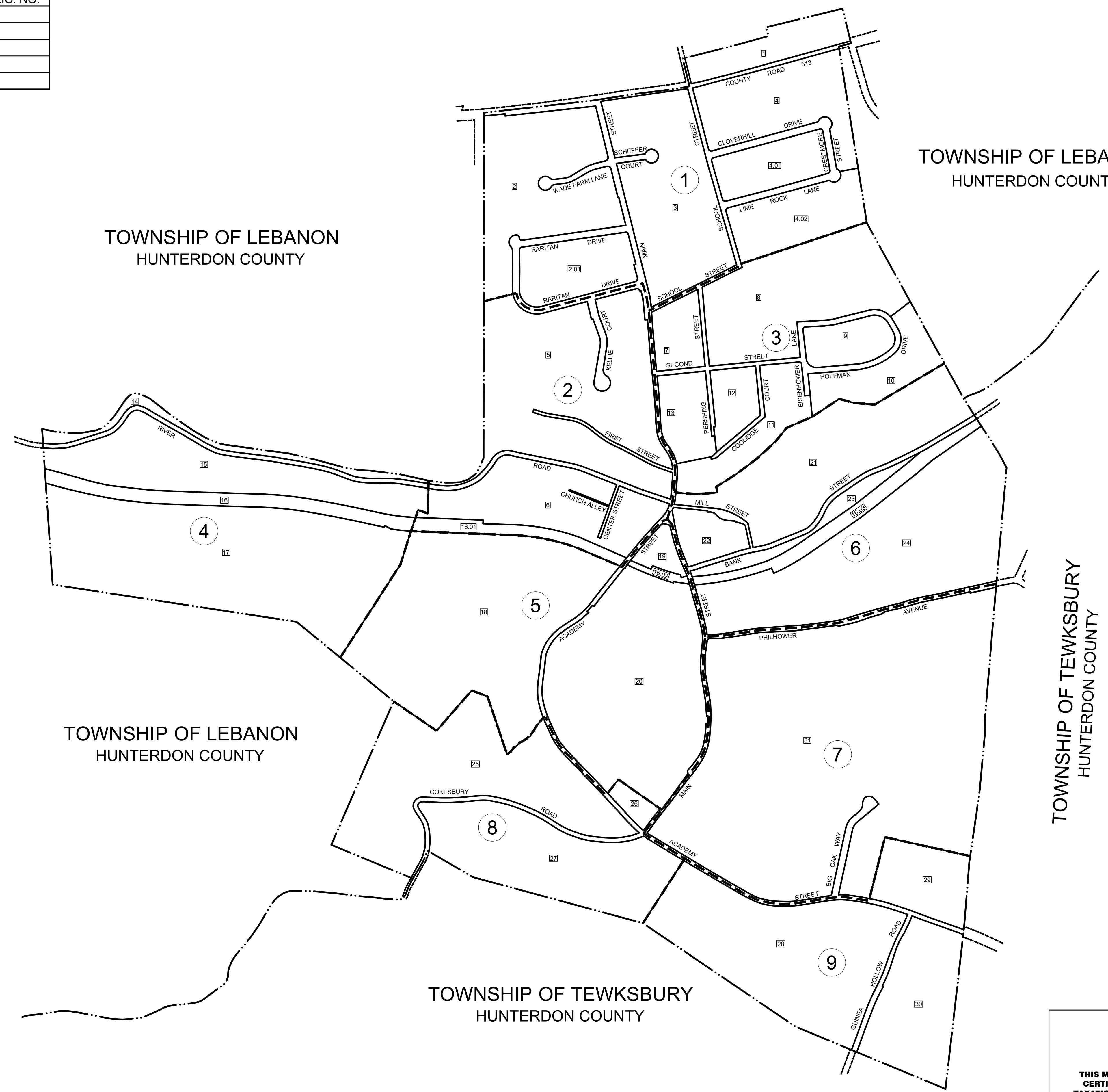


REVISIONS		
DATE	L. S. NAME	LIC. NO.



**LEGEND**

**KEY SHEET**

(20) DETAIL SHEET NUMBER

15001 BLOCK NUMBER

--- SHEET LIMIT LINE

— BLOCK LIMIT LINE

- · - · - COUNTY BOUNDARY

- · · · - MUNICIPAL BOUNDARY

**DETAIL SHEET**

15001 BLOCK NUMBER

10 LOT NUMBER

THE AREAS, BOUNDARIES AND DIMENSIONS SHOWN ON THIS TAX MAP, ARE DERIVED FROM GROUND SURVEYS, AERIAL SURVEYS, AND RECORDED PLANS, MAPS, DEEDS, WILLS, AND ARE TO BE USED FOR ASSESSMENT PURPOSES ONLY.

I HEREBY CERTIFY THAT THIS MAP AND ANY REQUIRED SURVEY HAS BEEN MADE UNDER MY IMMEDIATE SUPERVISION, AND COMPLIES WITH THE LAWS OF THE STATE OF NEW JERSEY.

THIS TAX MAP SUPERSEDES THE TAX MAP APPROVED FEBRUARY 25, 1963.

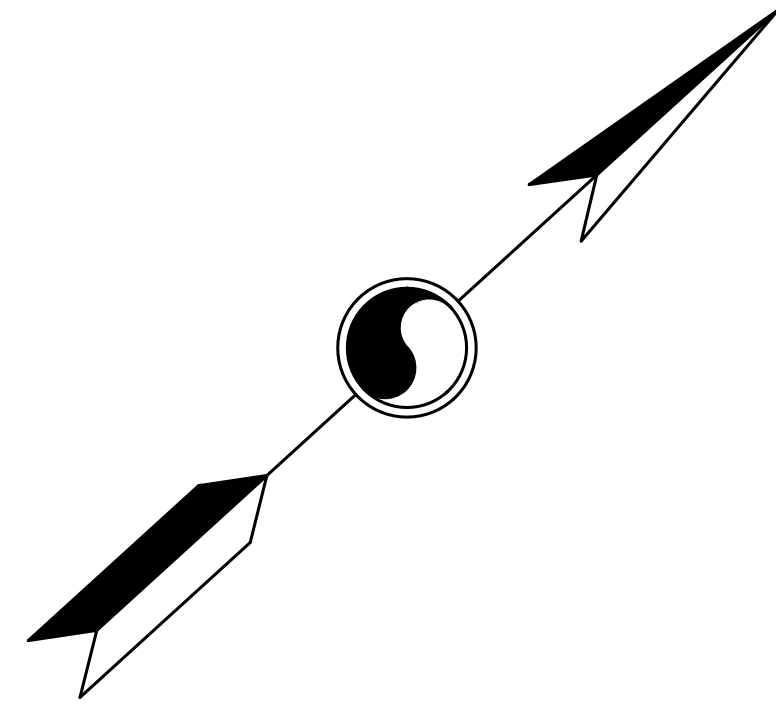
JOSEPH D. PHIL, P.L.S.  
NJ LICENSE NO. 24GS04336300

THIS MAP HAS BEEN DRAWN USING COMPUTER AIDED DRAFTING/DESIGN (CAD/D).

THIS MAP HAS BEEN GIVEN A FORMAL CERTIFICATION BY THE DIVISION OF TAXATION ON JUNE 10, 2024, SIGNED BY MELISSA THOMAS AND MATTHEW LOYER AND ASSIGNED SERIAL NUMBER 1166.

**TAX MAP**  
BOROUGH OF CALIFON  
HUNTERDON COUNTY, NEW JERSEY  
SCALE: 1" = 400' 05/22/2024  
**JOSEPH D. PHIL, P.L.S.**  
SUBURBAN CONSULTING ENGINEERS, INC.  
96 U.S. HIGHWAY 206, SUITE 101  
FLANDERS, N.J. 07836  
TO SHOW CONDITIONS AS OF 05/22/2024

REVISIONS		
DATE	L. S. NAME	LIC. NO.

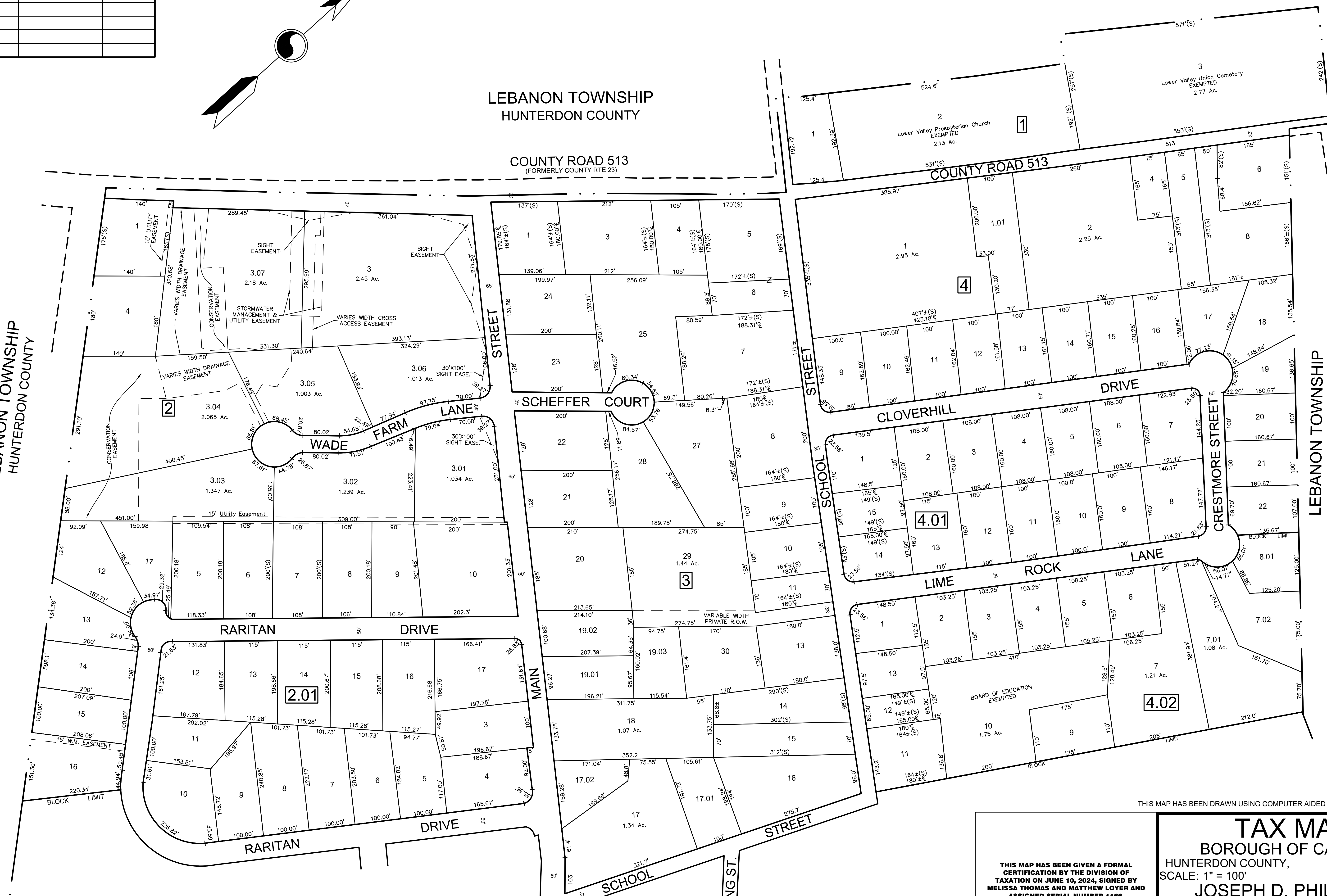


LEBANON TOWNSHIP  
HUNTERDON COUNTY

COUNTY ROAD 513  
(FORMERLY COUNTY RTE 23)

LEBANON TOWNSHIP  
HUNTERDON COUNTY

LEBANON TOWNSHIP  
HUNTERDON COUNTY



THIS MAP HAS BEEN DRAWN USING COMPUTER AIDED DRAFTING/DESIGN (CAD/D).

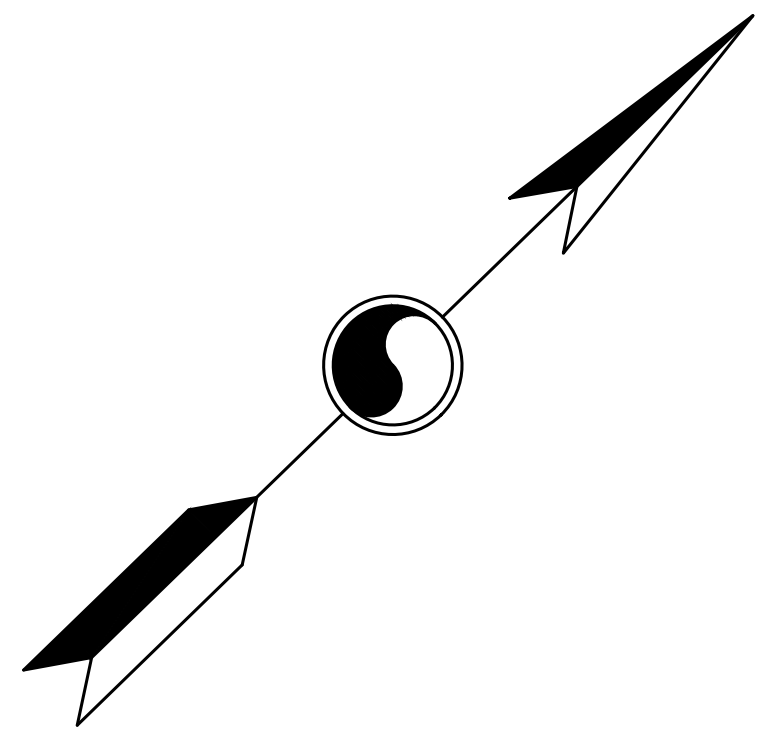
SHEET 2

SHEET 3

THIS MAP HAS BEEN GIVEN A FORMAL CERTIFICATION BY THE DIVISION OF TAXATION ON JUNE 10, 2024, SIGNED BY MELISSA THOMAS AND MATTHEW LOYER AND ASSIGNED SERIAL NUMBER 1166.

**TAX MAP**  
 BOROUGH OF CALIFON  
 HUNTERDON COUNTY, NEW JERSEY  
 SCALE: 1" = 100' 05/22/2024  
**JOSEPH D. PHIL, P.L.S.**  
 SUBURBAN CONSULTING ENGINEERS, INC.  
 96 U.S. HIGHWAY 206, SUITE 101  
 FLANDERS, N.J. 07836  
 TO SHOW CONDITIONS AS OF 05/22/2024

REVISIONS		
DATE	L. S. NAME	LIC. NO.



SHEET 1

SHEET 4



SHEET 5

SHEET 3

THIS MAP HAS BEEN DRAWN USING COMPUTER AIDED DRAFTING/DESIGN (CAD/D).

THIS MAP HAS BEEN GIVEN A FORMAL CERTIFICATION BY THE DIVISION OF TAXATION ON JUNE 10, 2024, SIGNED BY MELISSA THOMAS AND MATTHEW LOYER AND ASSIGNED SERIAL NUMBER 1166.

**TAX MAP**  
 BOROUGH OF CALIFON  
 HUNTERDON COUNTY, NEW JERSEY  
 SCALE: 1" = 100' 05/22/2024  
**JOSEPH D. PHIL, P.L.S.**  
 SUBURBAN CONSULTING ENGINEERS, INC.  
 96 U.S. HIGHWAY 206, SUITE 101  
 FLANDERS, N.J. 07836  
 TO SHOW CONDITIONS AS OF 05/22/2024



REVISIONS		
DATE	L. S. NAME	LIC. NO.

SHEET 1

SHEET 2



SHEET 6

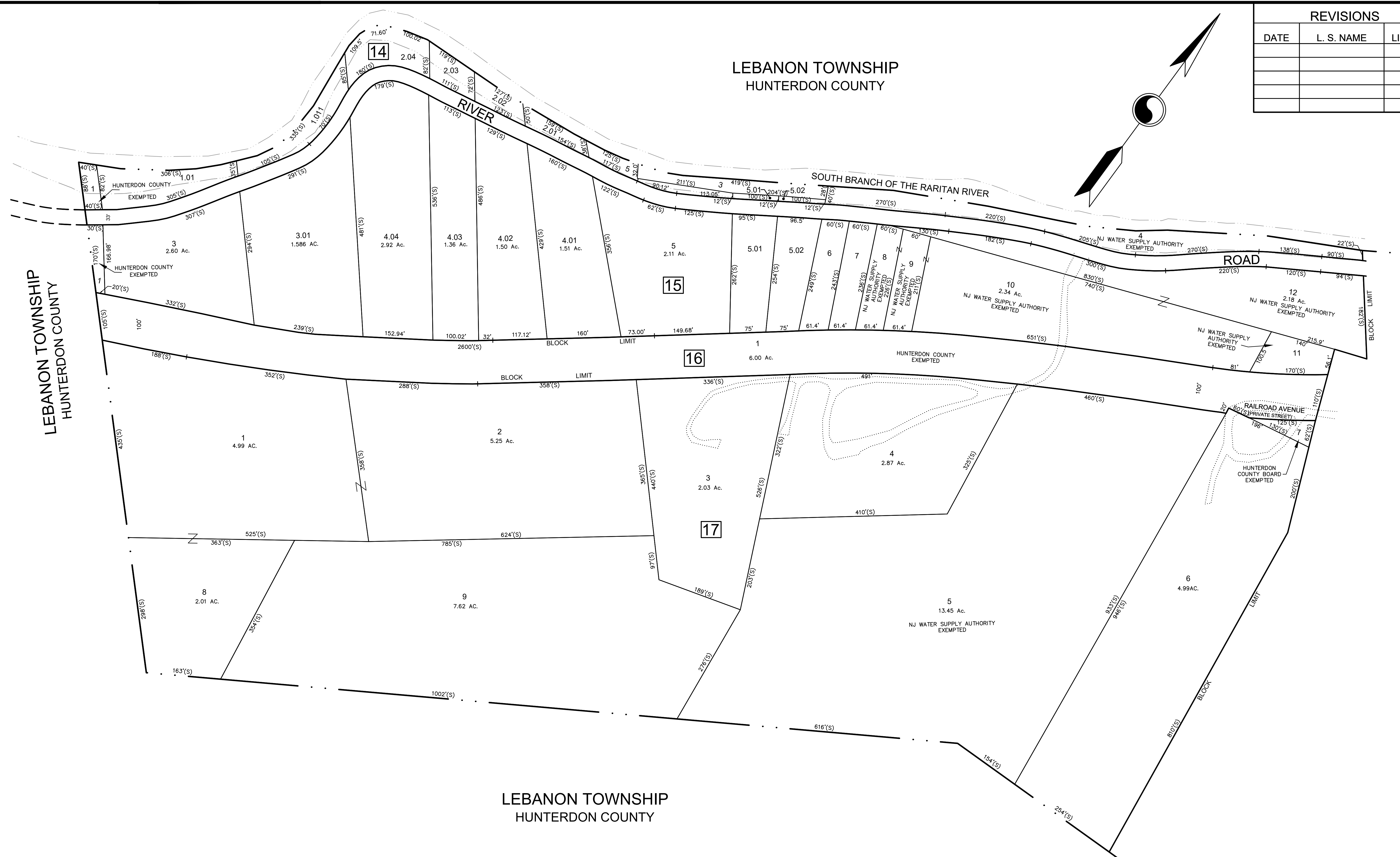
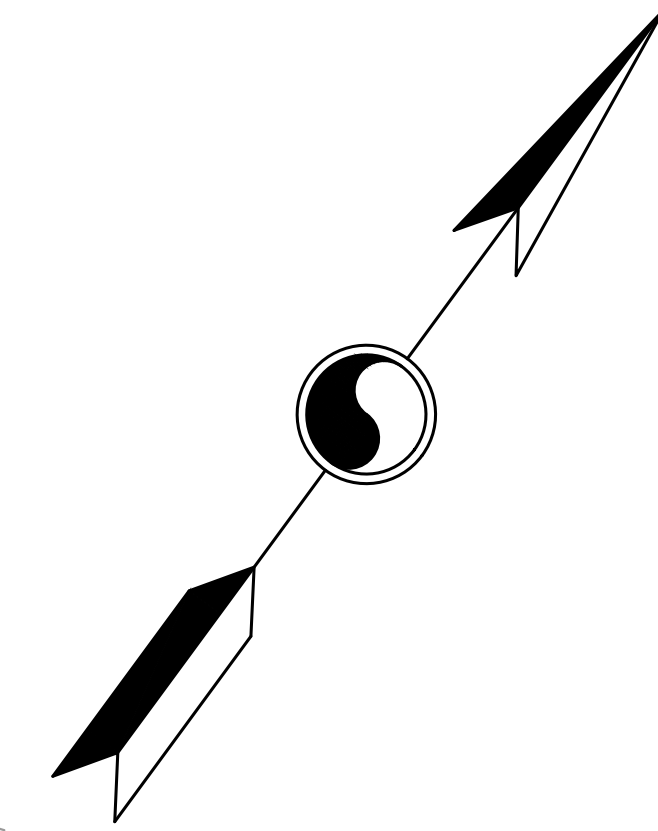
THIS MAP HAS BEEN DRAWN USING COMPUTER AIDED DRAFTING/DESIGN (CAD/D).

THIS MAP HAS BEEN GIVEN A FORMAL CERTIFICATION BY THE DIVISION OF TAXATION ON JUNE 10, 2024, SIGNED BY MELISSA THOMAS AND MATTHEW LOYER AND ASSIGNED SERIAL NUMBER 1166.

**TAX MAP**  
 BOROUGH OF CALIFON  
 HUNTERDON COUNTY, NEW JERSEY  
 SCALE: 1" = 100' 05/22/2024  
**JOSEPH D. PHIL, P.L.S.**  
 SUBURBAN CONSULTING ENGINEERS, INC.  
 96 U.S. HIGHWAY 206, SUITE 101  
 FLANDERS, N.J. 07836  
 TO SHOW CONDITIONS AS OF 05/22/2024

REVISIONS		
DATE	L. S. NAME	LIC. NO.

LEBANON TOWNSHIP  
HUNTERDON COUNTY



LEBANON TOWNSHIP  
HUNTERDON COUNTY

LEBANON TOWNSHIP  
HUNTERDON COUNTY

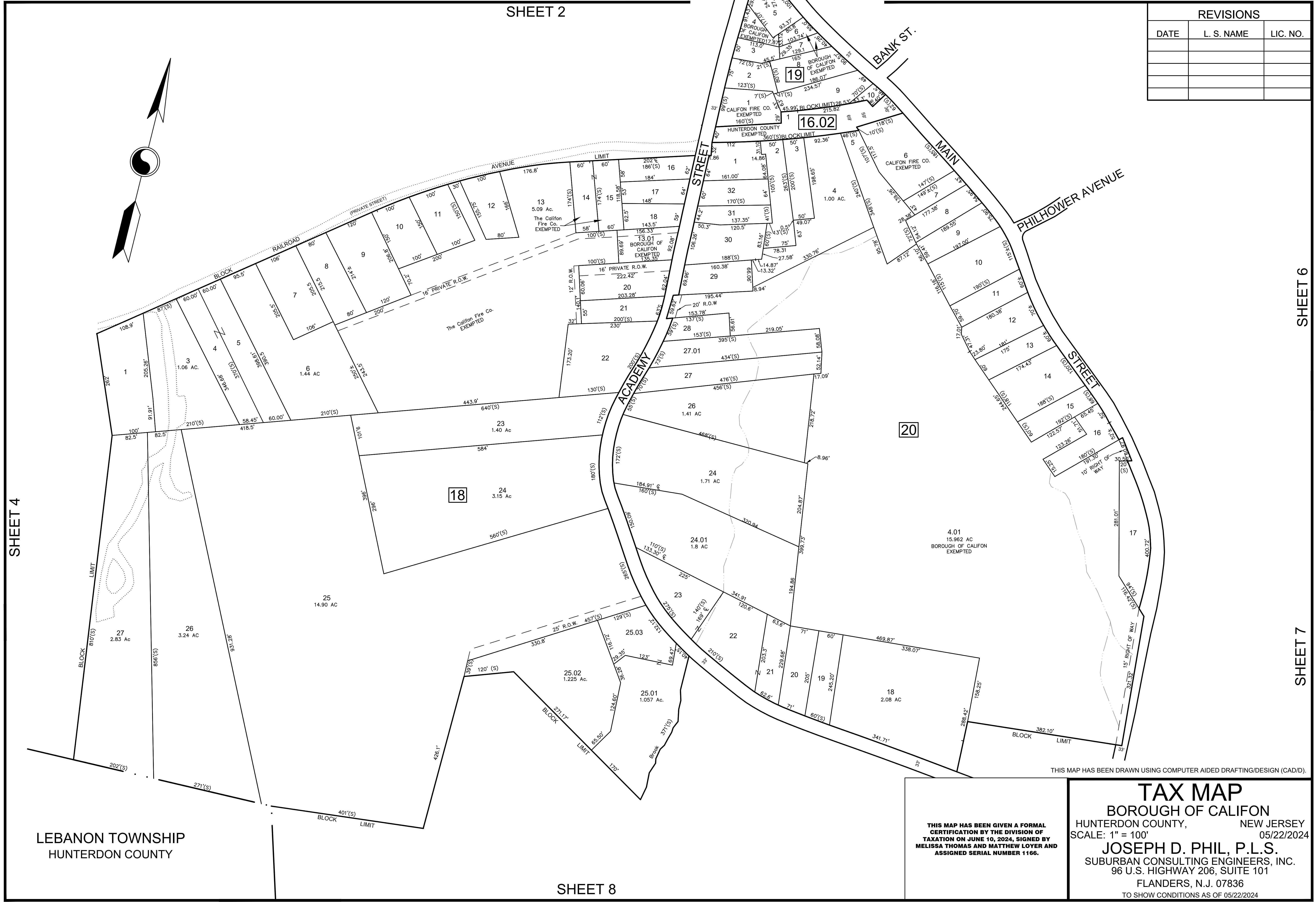
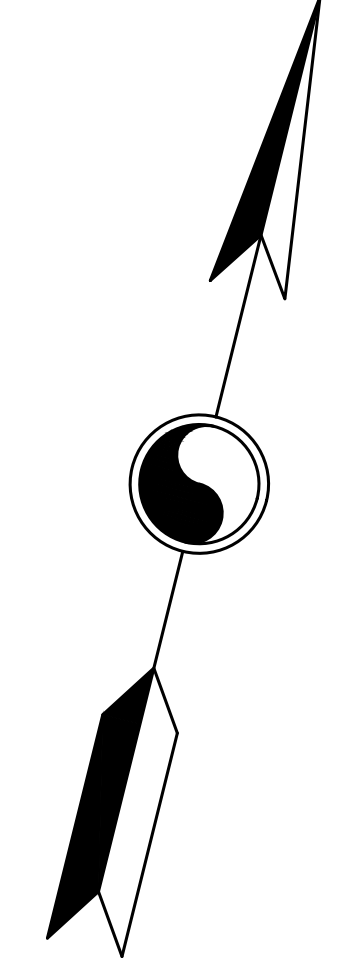
SHEET 2 |

SHEET 5

THIS MAP HAS BEEN DRAWN USING COMPUTER AIDED DRAFTING/DESIGN (CAD/D).

<p><b>THIS MAP HAS BEEN GIVEN A FORMAL CERTIFICATION BY THE DIVISION OF TAXATION ON JUNE 10, 2024, SIGNED BY MELISSA THOMAS AND MATTHEW LOYER AND ASSIGNED SERIAL NUMBER 1166.</b></p>	<p><b>TAX MAP</b></p>
	<p>BOROUGH OF CALIFON</p>
	<p>HUNTERDON COUNTY, NEW JERSEY</p>
	<p>SCALE: 1" = 100' 05/22/2024</p>
	<p><b>JOSEPH D. PHIL, P.L.S.</b> SUBURBAN CONSULTING ENGINEERS, INC. 96 U.S. HIGHWAY 206, SUITE 101 FLANDERS, N.J. 07836 TO SHOW CONDITIONS AS OF 05/22/2024</p>

REVISIONS		
DATE	L. S. NAME	LIC. NO.



SHEET 4

SHEET 6

SHEET 7

SHEET 8

LEBANON TOWNSHIP  
HUNTERDON COUNTY

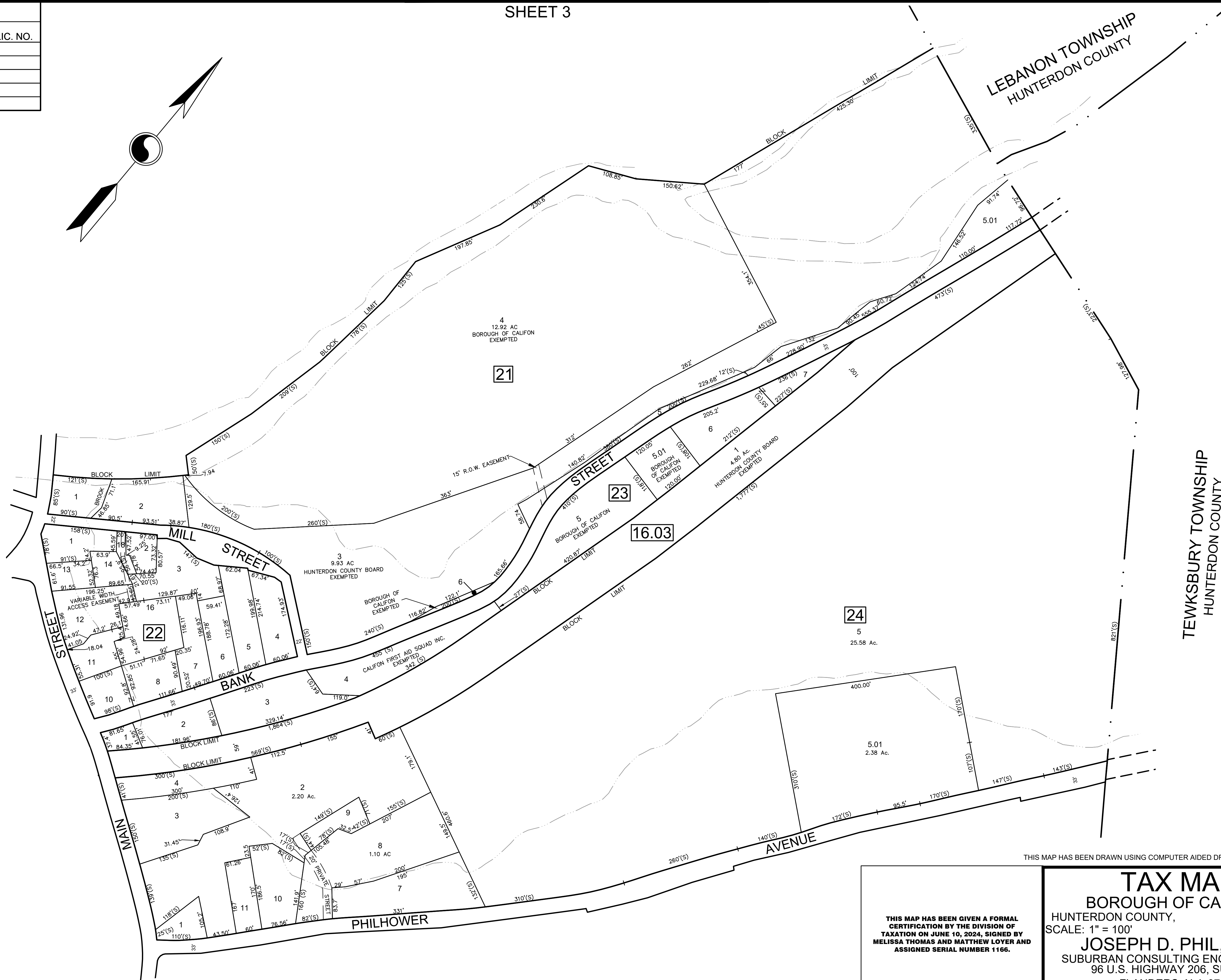
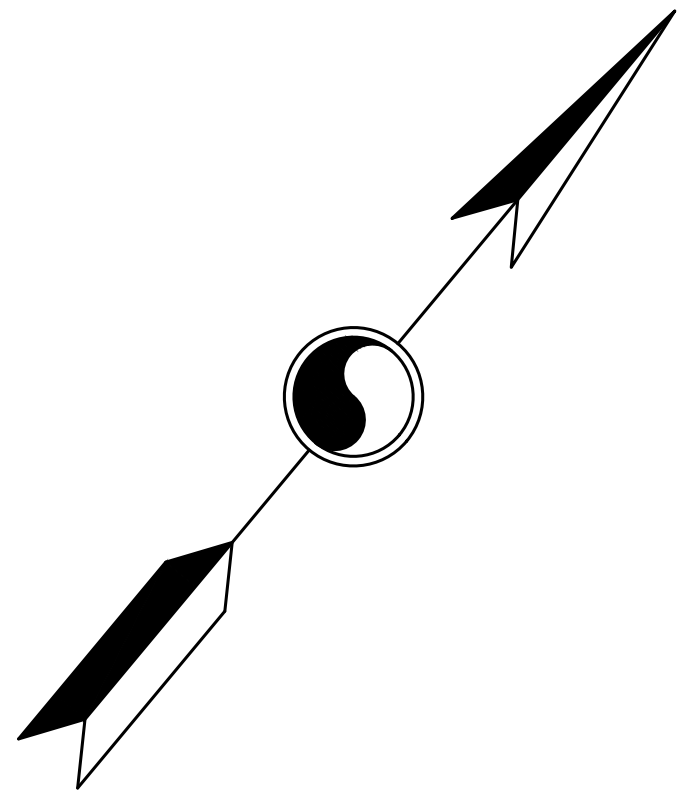
THIS MAP HAS BEEN DRAWN USING COMPUTER AIDED DRAFTING/DESIGN (CAD/D).

THIS MAP HAS BEEN GIVEN A FORMAL  
CERTIFICATION BY THE DIVISION OF  
TAXATION ON JUNE 10, 2024, SIGNED BY  
MELISSA THOMAS AND MATTHEW LOYER AND  
ASSIGNED SERIAL NUMBER 1166.

**TAX MAP**  
BOROUGH OF CALIFON  
HUNTERDON COUNTY, NEW JERSEY  
SCALE: 1" = 100' 05/22/2024  
**JOSEPH D. PHIL, P.L.S.**  
SUBURBAN CONSULTING ENGINEERS, INC.  
96 U.S. HIGHWAY 206, SUITE 101  
FLANDERS, N.J. 07836  
TO SHOW CONDITIONS AS OF 05/22/2024

REVISIONS		
DATE	L. S. NAME	LIC. NO.

SHEET 3



LEBANON TOWNSHIP  
HUNTERDON COUNTY

TEWKSBURY TOWNSHIP  
HUNTERDON COUNTY

SHEET 5

SHEET 7

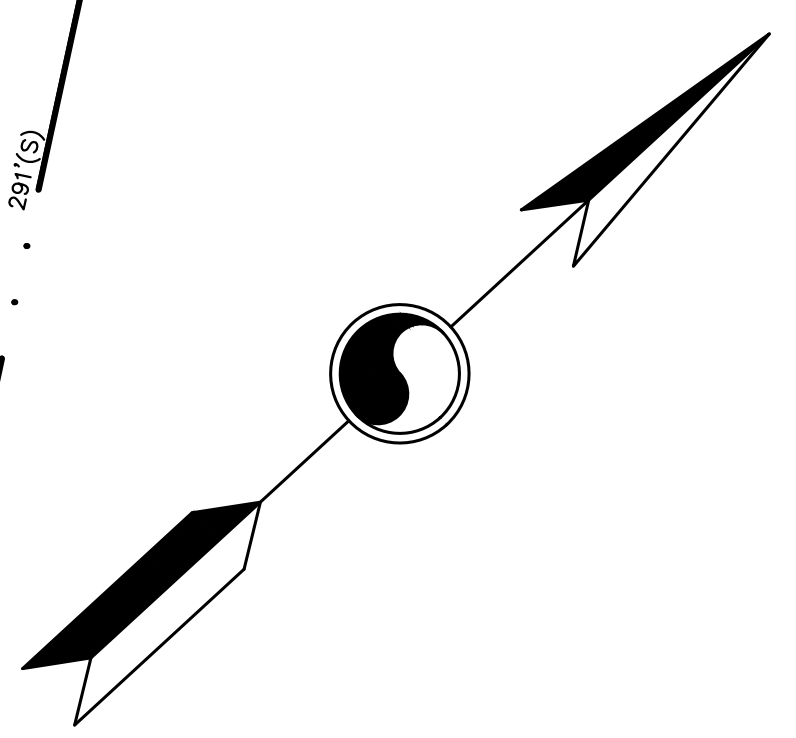
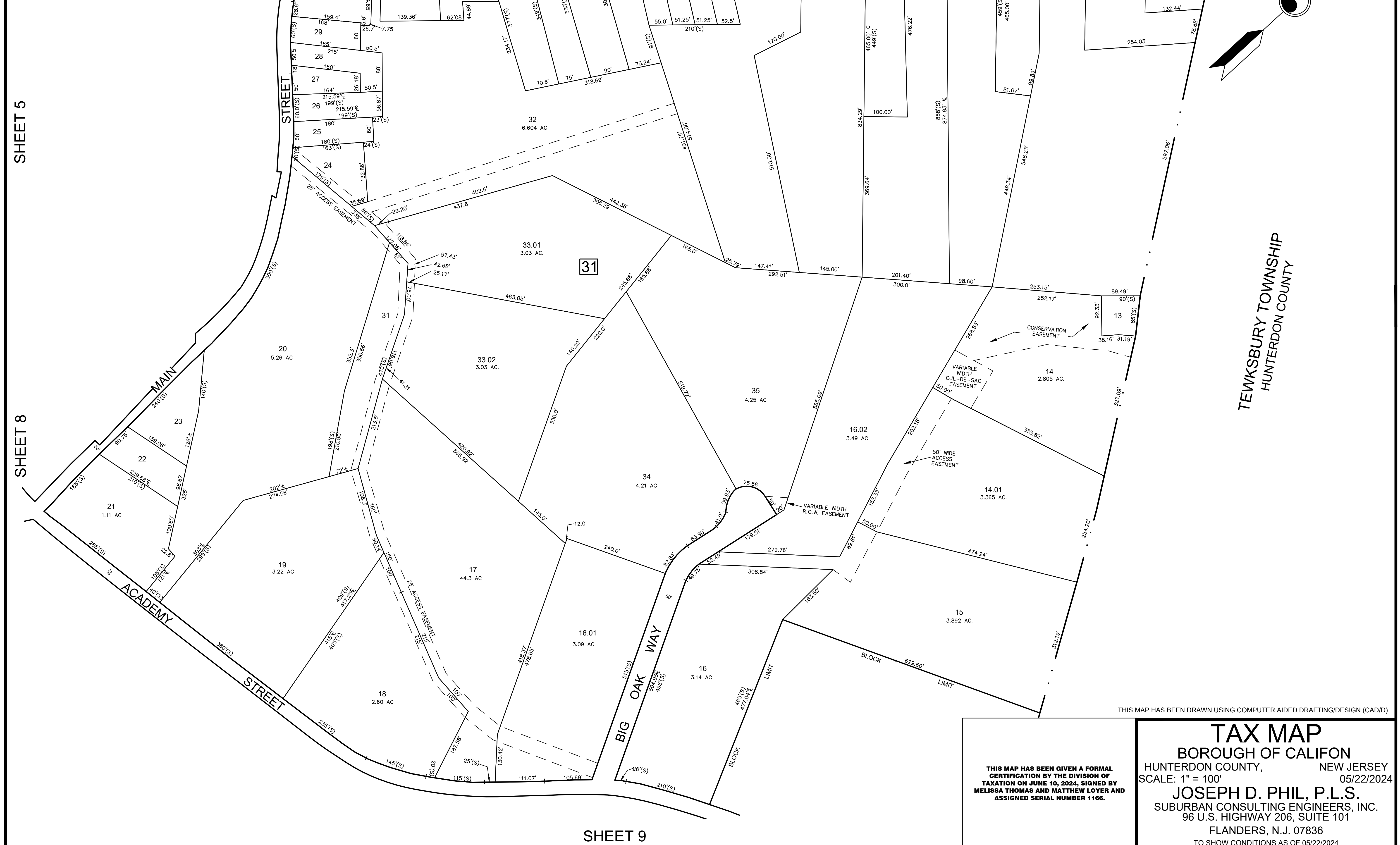
THIS MAP HAS BEEN DRAWN USING COMPUTER AIDED DRAFTING/DESIGN (CAD/D).

THIS MAP HAS BEEN GIVEN A FORMAL CERTIFICATION BY THE DIVISION OF TAXATION ON JUNE 10, 2024, SIGNED BY MELISSA THOMAS AND MATTHEW LOYER AND ASSIGNED SERIAL NUMBER 1166.

**TAX MAP**  
BOROUGH OF CALIFON  
HUNTERDON COUNTY, NEW JERSEY  
SCALE: 1" = 100' 05/22/2024  
**JOSEPH D. PHIL, P.L.S.**  
SUBURBAN CONSULTING ENGINEERS, INC.  
96 U.S. HIGHWAY 206, SUITE 101  
FLANDERS, N.J. 07836  
TO SHOW CONDITIONS AS OF 05/22/2024



REVISIONS		
DATE	L. S. NAME	LIC. NO.



TEWKSBURY TOWNSHIP  
HUNTERDON COUNTY

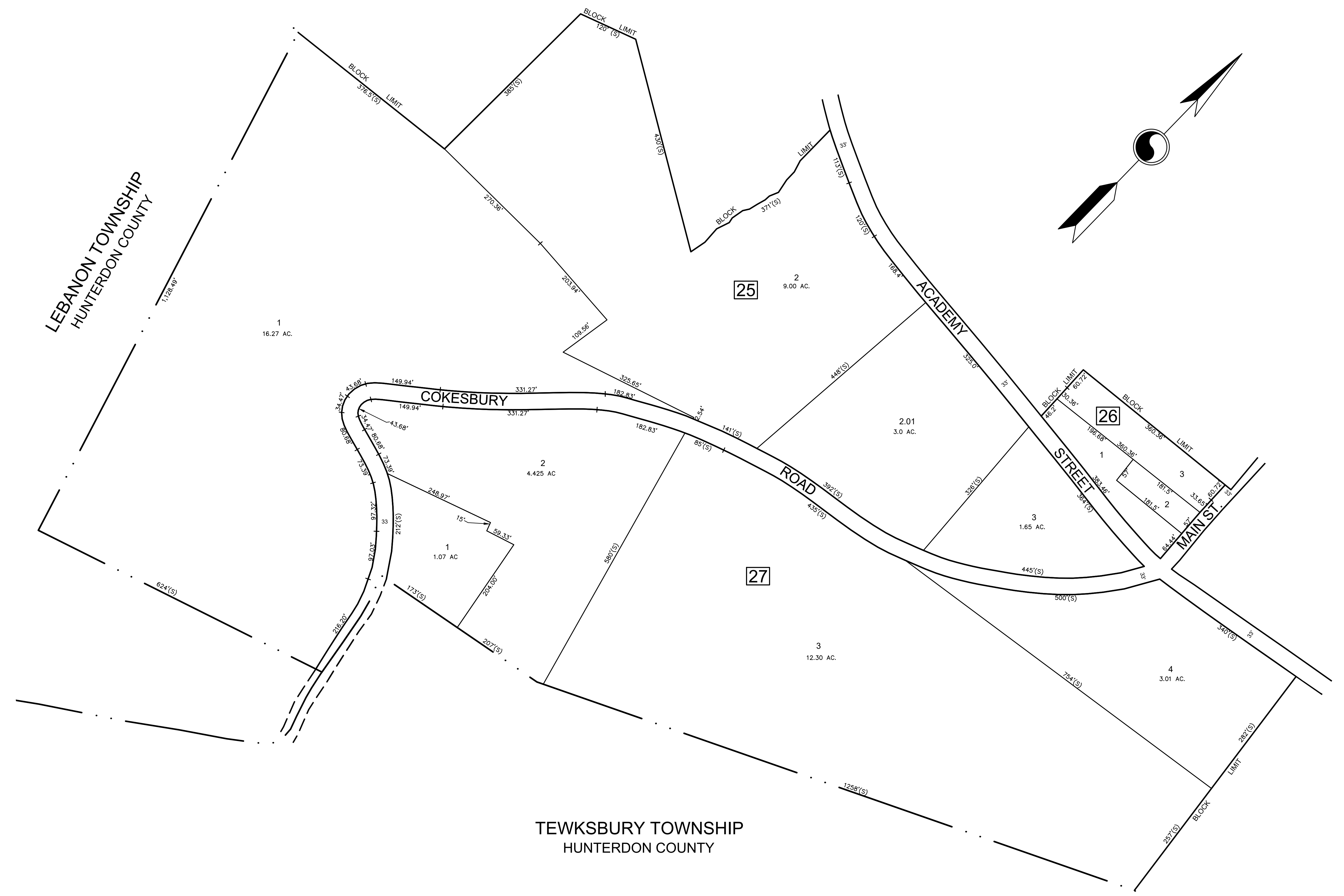
THIS MAP HAS BEEN DRAWN USING COMPUTER AIDED DRAFTING/DESIGN (CAD/D).

THIS MAP HAS BEEN GIVEN A FORMAL CERTIFICATION BY THE DIVISION OF TAXATION ON JUNE 10, 2024, SIGNED BY MELISSA THOMAS AND MATTHEW LOYER AND ASSIGNED SERIAL NUMBER 1166.

**TAX MAP**  
BOROUGH OF CALIFON  
HUNTERDON COUNTY, NEW JERSEY  
SCALE: 1" = 100' 05/22/2024  
**JOSEPH D. PHIL, P.L.S.**  
SUBURBAN CONSULTING ENGINEERS, INC.  
96 U.S. HIGHWAY 206, SUITE 101  
FLANDERS, N.J. 07836  
TO SHOW CONDITIONS AS OF 05/22/2024



REVISIONS		
DATE	L. S. NAME	LIC. NO.



SHEET 7

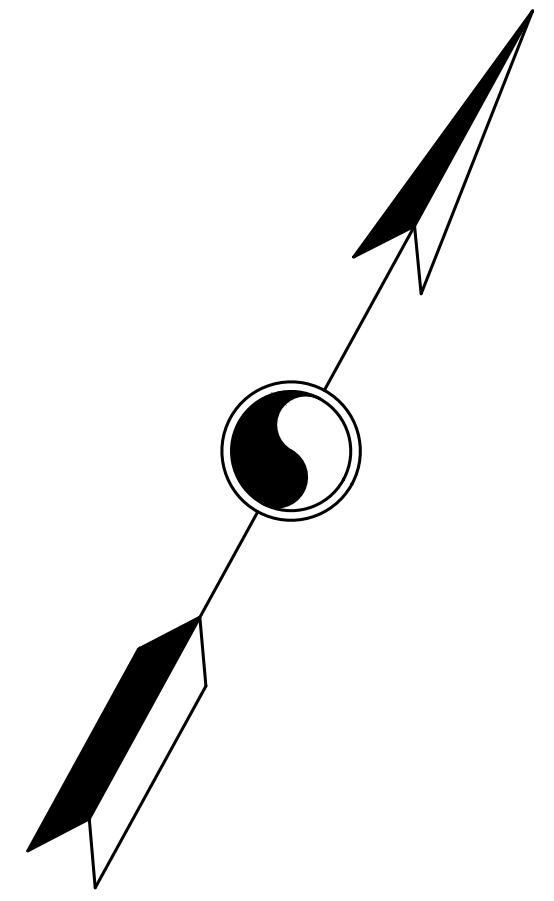
SHEET 9

THIS MAP HAS BEEN DRAWN USING COMPUTER AIDED DRAFTING/DESIGN (CAD/D).

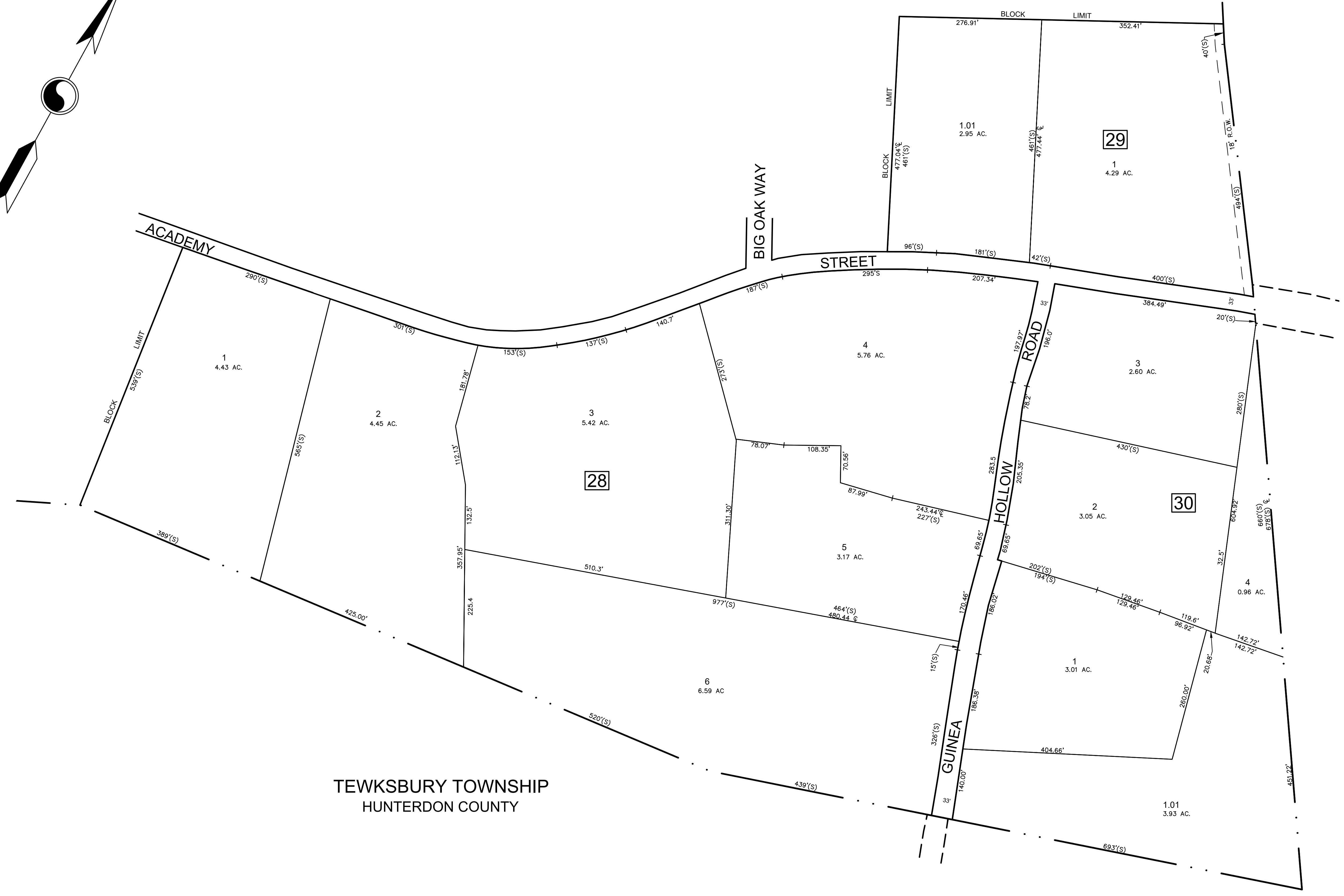
THIS MAP HAS BEEN GIVEN A FORMAL CERTIFICATION BY THE DIVISION OF TAXATION ON JUNE 10, 2024, SIGNED BY MELISSA THOMAS AND MATTHEW LOYER AND ASSIGNED SERIAL NUMBER 1166.

**TAX MAP**  
 BOROUGH OF CALIFON  
 HUNTERDON COUNTY, NEW JERSEY  
 SCALE: 1" = 100' 05/22/2024  
**JOSEPH D. PHIL, P.L.S.**  
 SUBURBAN CONSULTING ENGINEERS, INC.  
 96 U.S. HIGHWAY 206, SUITE 101  
 FLANDERS, N.J. 07836  
 TO SHOW CONDITIONS AS OF 05/22/2024

REVISIONS		
DATE	L. S. NAME	LIC. NO.



SHEET 8



TEWKSBURY TOWNSHIP  
HUNTERDON COUNTY

TEWKSBURY TOWNSHIP  
HUNTERDON COUNTY

THIS MAP HAS BEEN DRAWN USING COMPUTER AIDED DRAFTING/DESIGN (CAD/D).

THIS MAP HAS BEEN GIVEN A FORMAL  
CERTIFICATION BY THE DIVISION OF  
TAXATION ON JUNE 10, 2024, SIGNED BY  
MELISSA THOMAS AND MATTHEW LOYER AND  
ASSIGNED SERIAL NUMBER 1166.

**TAX MAP**  
BOROUGH OF CALIFON  
HUNTERDON COUNTY, NEW JERSEY  
SCALE: 1" = 100' 05/22/2024  
**JOSEPH D. PHIL, P.L.S.**  
SUBURBAN CONSULTING ENGINEERS, INC.  
96 U.S. HIGHWAY 206, SUITE 101  
FLANDERS, N.J. 07836  
TO SHOW CONDITIONS AS OF 05/22/2024